

SAN BERNARDINO INTERNATIONAL AIRPORT PAVEMENT REHABILITATION

105 N. LELAND NORTON WAY
SAN BERNARDINO, CA 92408

TranSystems
180 GRAND AVENUE
SUITE 400
OAKLAND, CALIFORNIA, 94612
PHONE: (510) 835-2761
FAX: (510) 835-9839

CONSULTANTS:

**SAN BERNARDINO INTERNATIONAL
AIRPORT
PAVEMENT REHABILITATION**
105 N. LELAND NORTON WAY
SAN BERNARDINO, CA 92408

REVISIONS:	DATE	DESCRIPTION
01/28/2010	FINAL ISSUED TO SBIAA	
12/18/2009	SBIAA REVIEW	

PROJ NO: P506090005
SCALE: AS NOTED
DATE: 12/18/09
DESIGNED BY: RC
DRAWN BY: AAO/AOB/KW
CHECKED BY: RC

SHEET TITLE:
TITLE SHEET

SHEET NO.
GC-001A

SHEET OF

PROJECT DATA

PROJECT CONTACTS:

PROJECT ADDRESS: 105 N. LELAND NORTON WAY
SAN BERNARDINO, CA 92408

DEVELOPER: NORTON DEVELOPMENT GROUP
255 S. LELAND NORTON WAY, SUITE 5
SAN BERNARDINO, CA 92408

OWNER: SAN BERNARDINO INTERNATIONAL AIRPORT AUTHORITY
294 S. LELAND NORTON WAY
SAN BERNARDINO, CA 92408

ENGINEER: TRANSYSTEMS
PROJECT MANAGER:
STEVEN SILVER
TEL: 562-594-6974
FAX: 562-594-6975

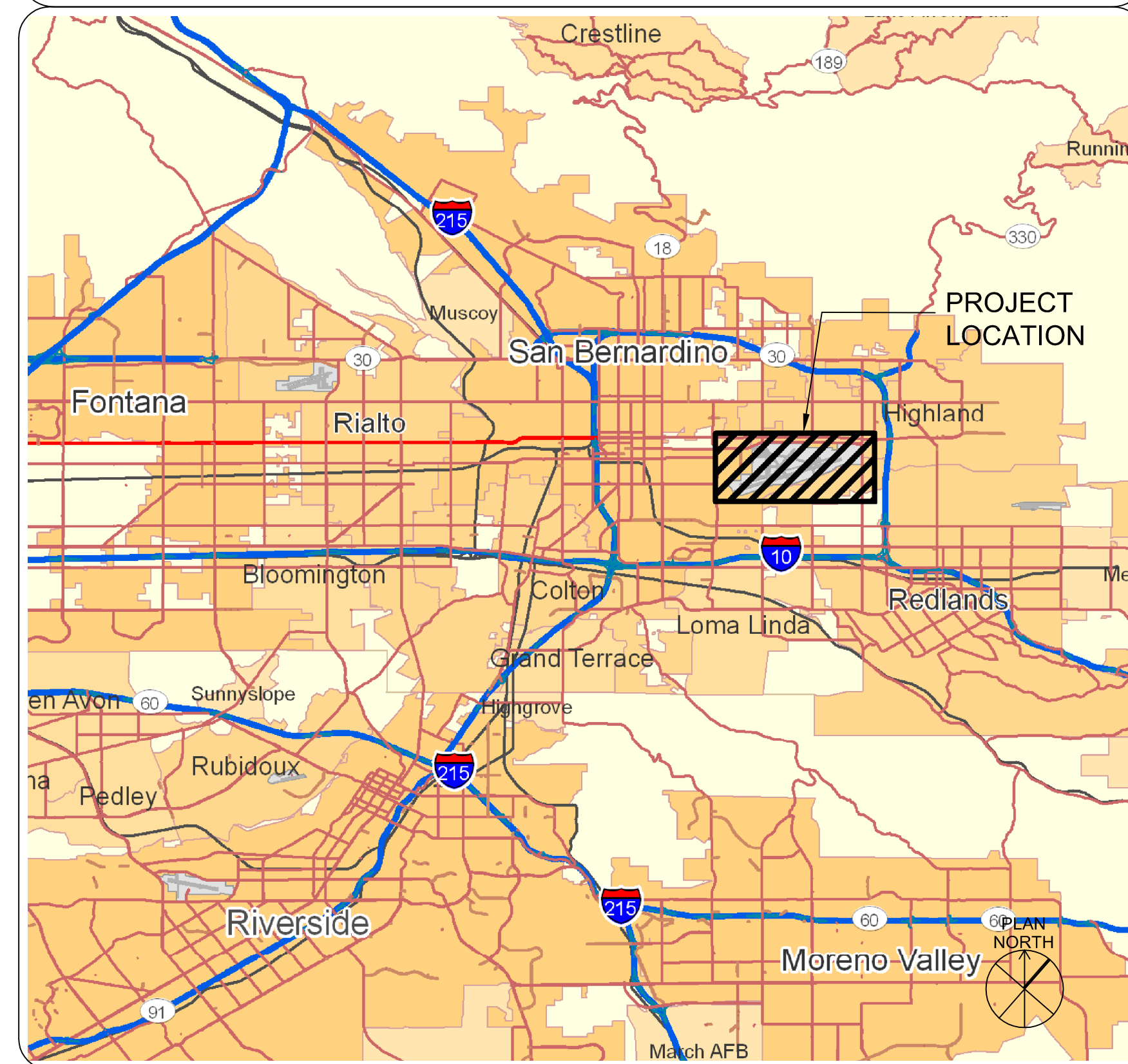
CIVIL ENGINEER:
ROSA CHEN
TEL: 510-835-2761
FAX: 510-835-9839

INDEX OF DRAWINGS

GC-001A TITLE SHEET
GC-002A LEGEND, ABBREVIATIONS, AND NOTES
GC-100A KEY MAP
GC-101A OVERALL SITE PLAN
CS-101A APRON SITE PLAN
CS-501A CONSTRUCTION DETAILS

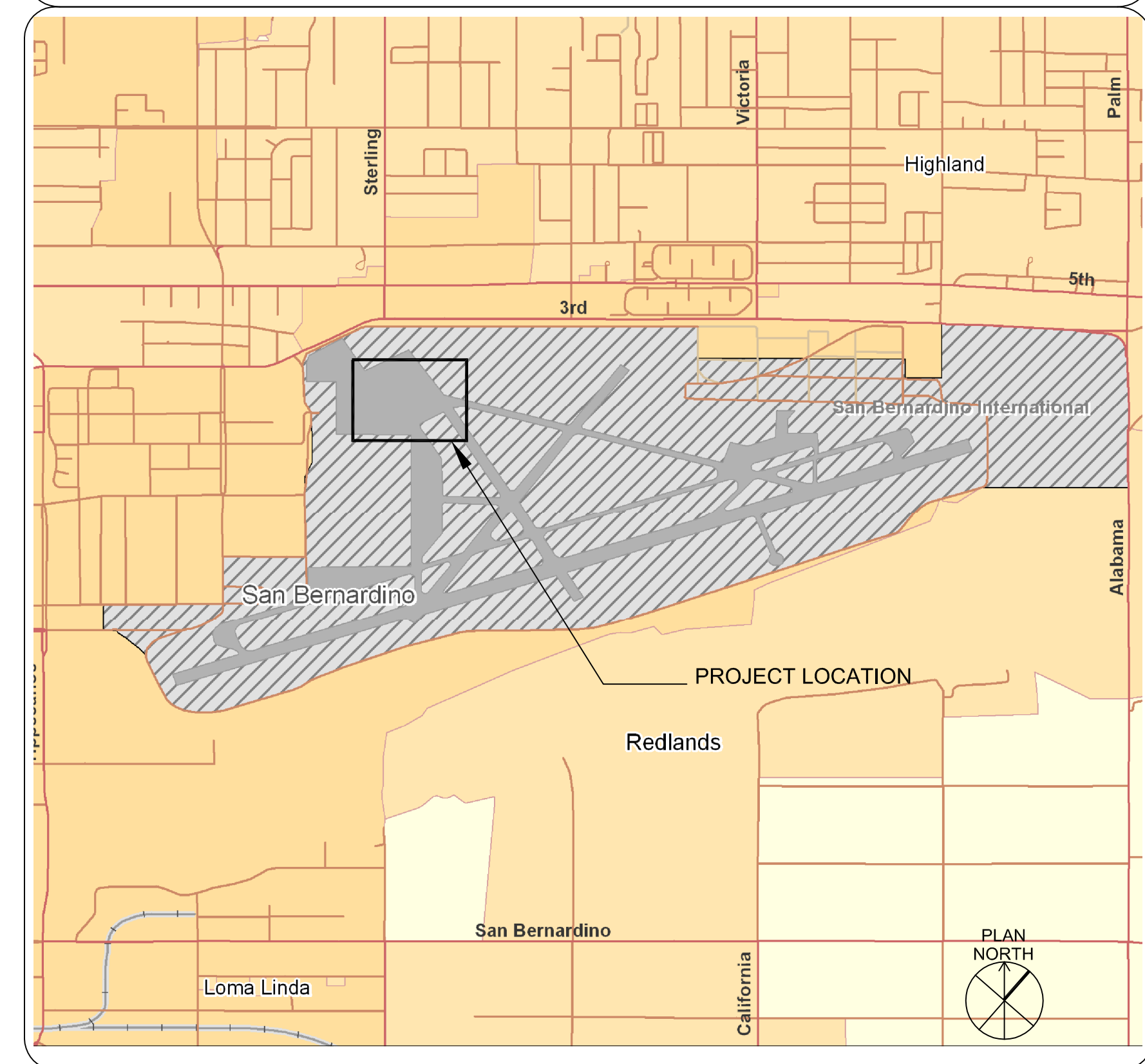
SS-1.0 OVERALL STRIPING PLAN
SS-1.2 ENLARGED TAXILANE STRIPING - MIDDLE
SS-1.3 ENLARGED TAXILANE STRIPING - NORTH SIDE

PROJECT LOCATION



NTS

VICINITY MAP



NTS

GENERAL NOTES:

- SEE SHEET GC-002A FOR GENERAL NOTES, EXISTING CONDITIONS NOTES, AND GENERAL CONSTRUCTION NOTES.



180 GRAND AVENUE
SUITE 400
OAKLAND, CALIFORNIA, 94612
PHONE: (510) 835-2761
FAX: (510) 835-9839

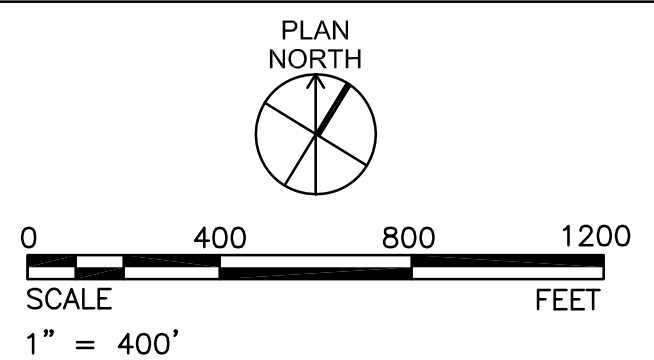
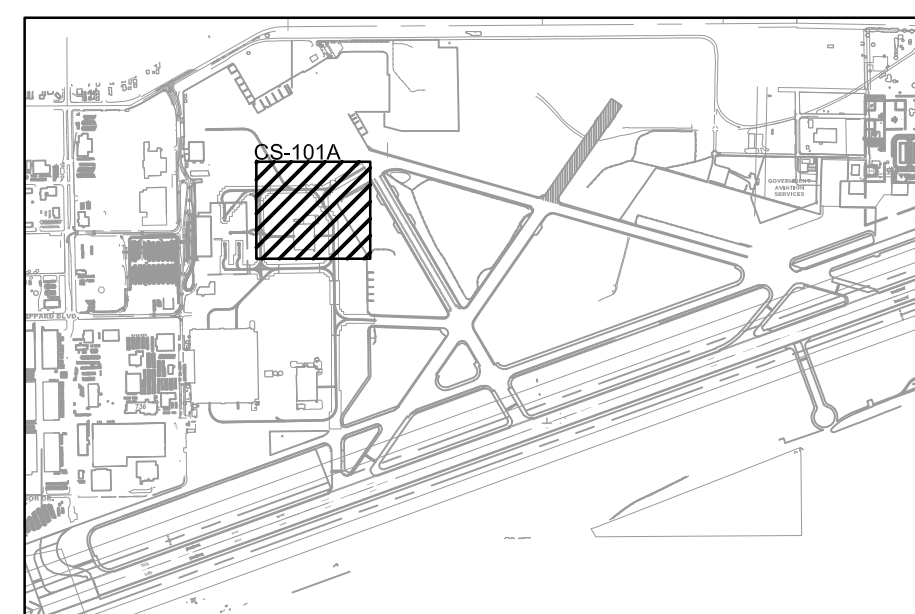
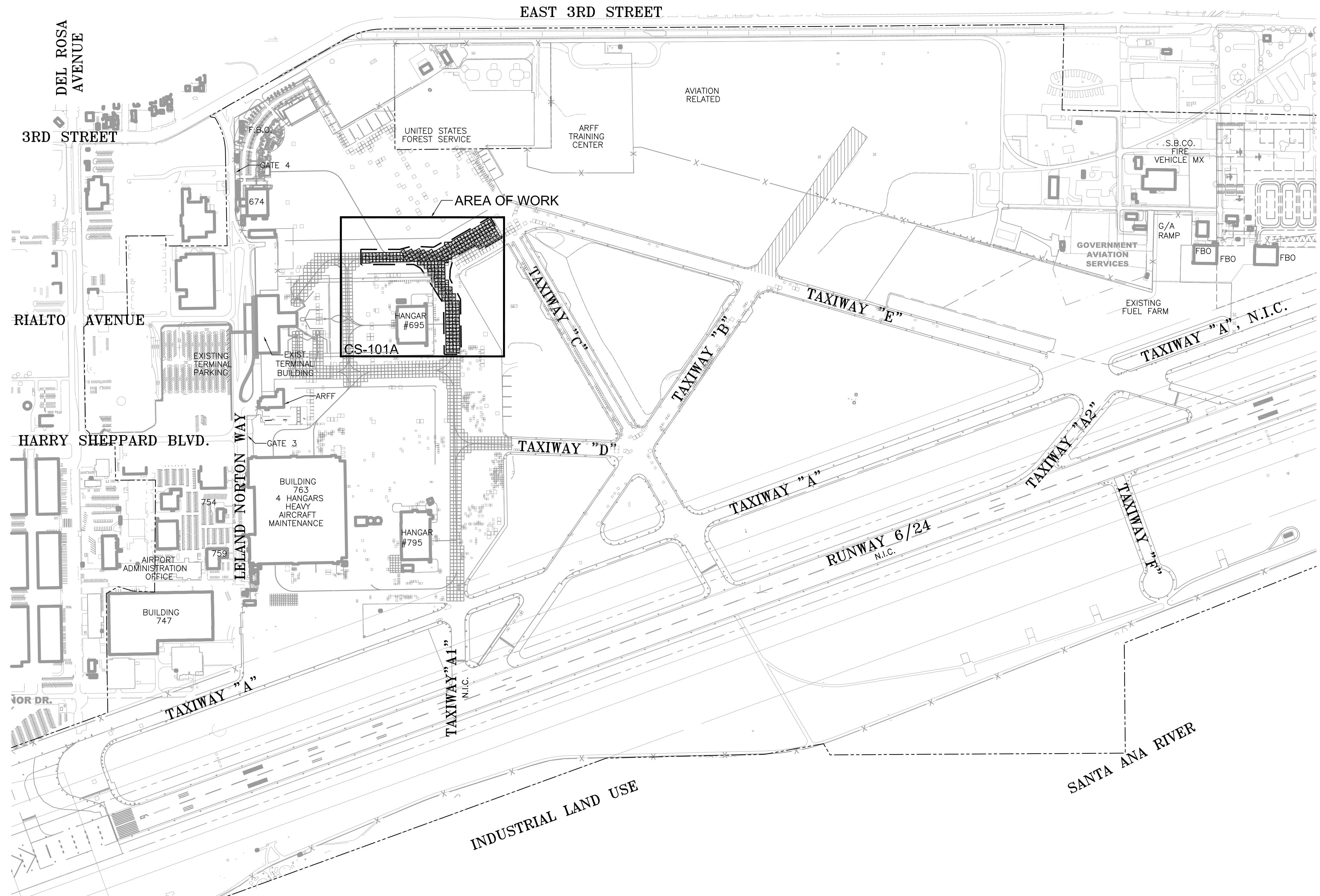
CONSULTANTS:

SAN BERNARDINO INTERNATIONAL AIRPORT
PAVEMENT REHABILITATION
105 N. LELAND NORTON WAY
SAN BERNARDINO, CA 94208

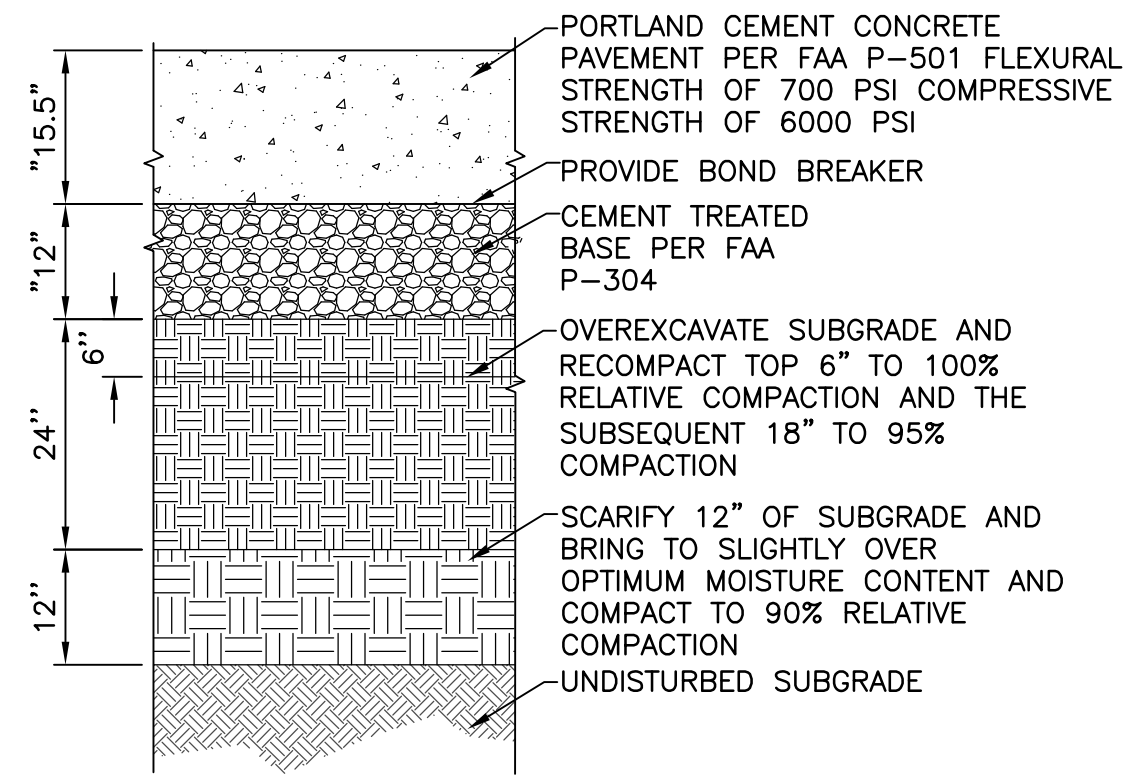
REVISIONS:	DATE	DESCRIPTION
01/28/2010	FINAL ISSUED TO SBIAA	
12/18/2009	SBIAA REVIEW	

PROJ NO: P506090005
SCALE: AS NOTED
DATE: 12/18/09
DESIGNED BY: RC
DRAWN BY: AAO/AOB/KW
CHECKED BY: RC

SHEET TITLE:
KEY MAP
SHEET NO. **GC-100A**
SHEET OF



G:\LEB\09\005\Site\Phase2\GC-100A.dwg, Plotter: Jan 29, 2010 - 2:55pm

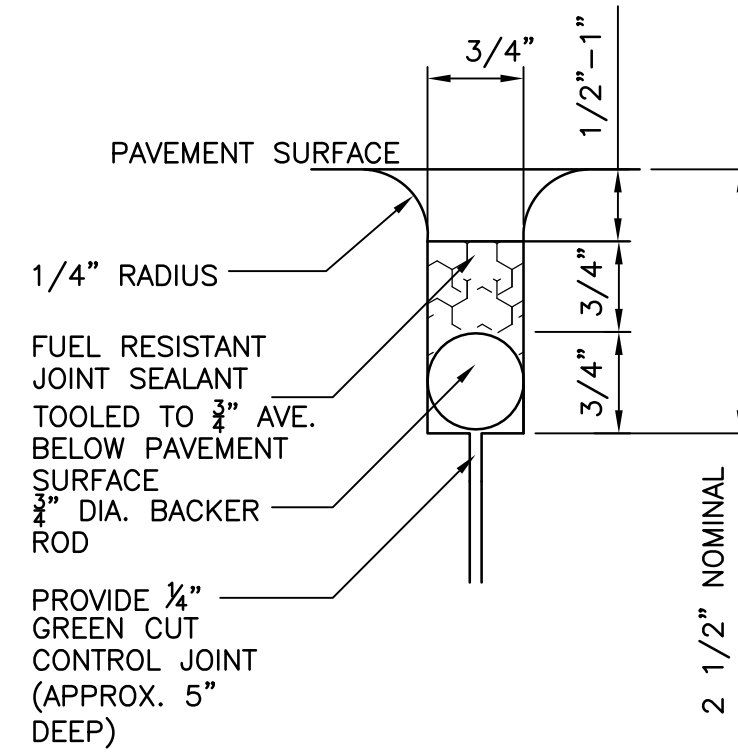


NOTES:

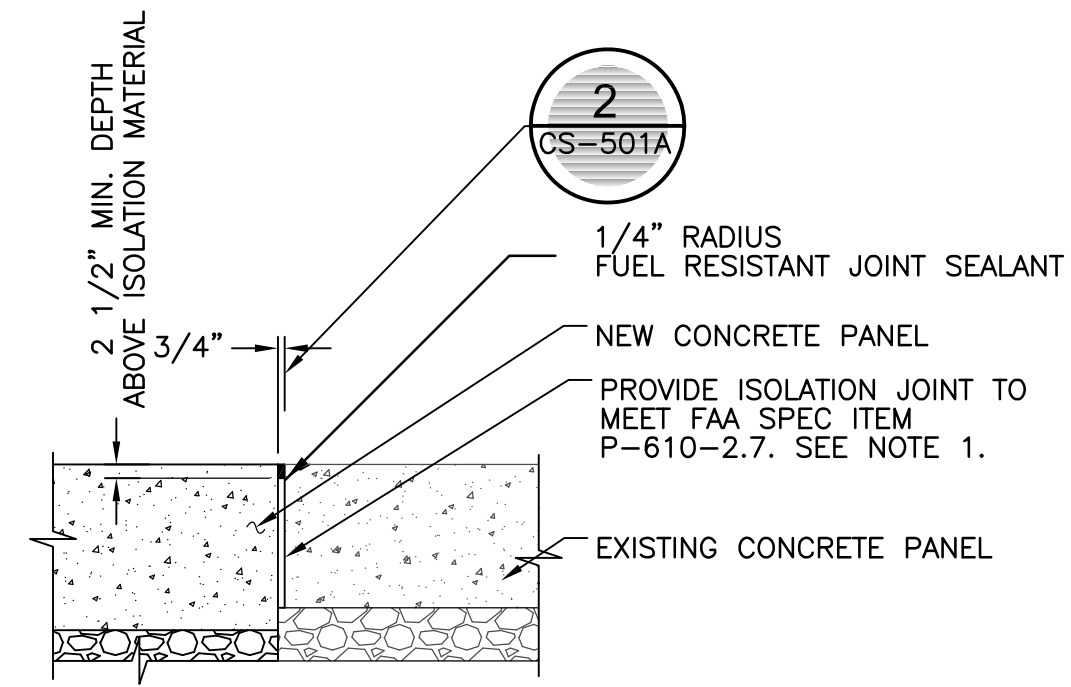
1. SEE DETAILS 2 TO 5 ON THIS SHEET.
2. PROVIDE DOWELS PER DETAIL 4 ON THIS SHEET.

NOTES:

1. ALL JOINTS SHALL BE FILLED AND SEALED WITH JET-FUEL RESISTANT SEMI-RIGID JOINT SEALER MATERIAL.
2. JOINT SEALING MATERIAL SHALL MEET THE REQUIREMENTS OF THE PROJECT SPECIFICATIONS.



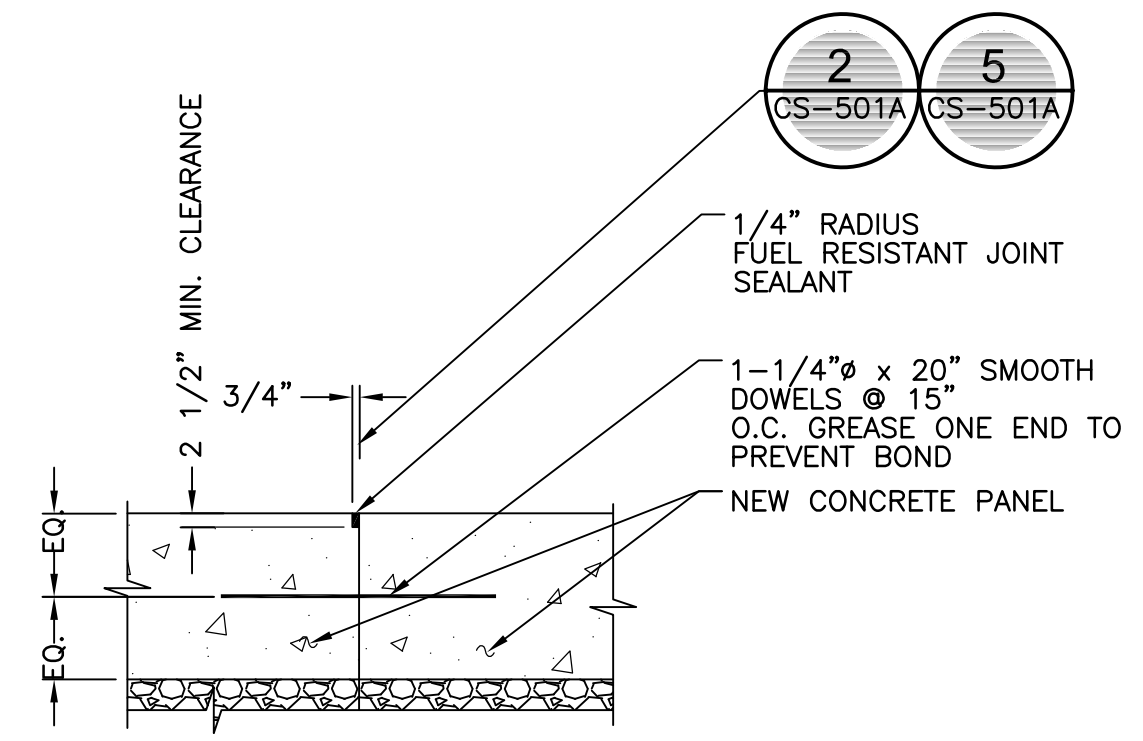
2
CS-501A
JOINT SEALANT FOR NEW CONSTRUCTION
N.T.S.



NOTES:

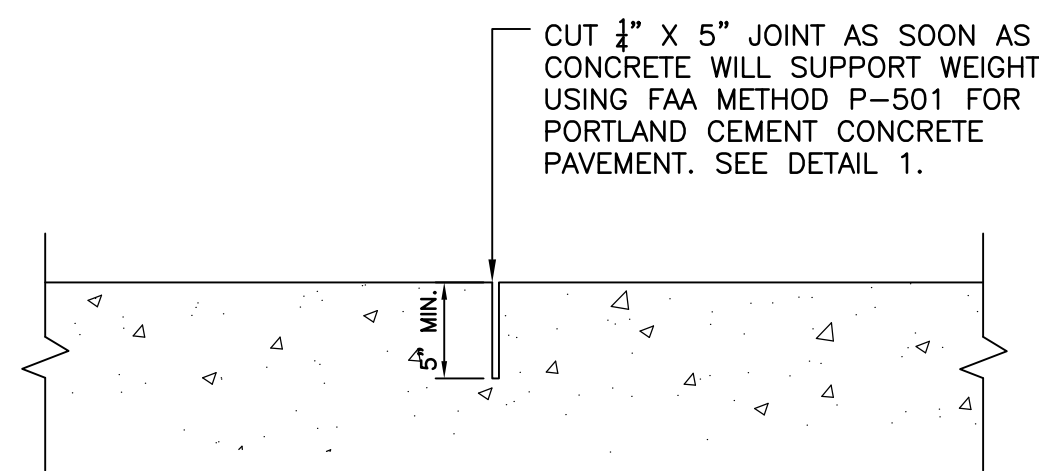
1. PRIOR TO PLACING JOINTS AND NEW CONCRETE, REMOVE EXISTING LOOSE AND CRUMBLING MATERIAL USING CROWBAR OR SIMILAR TOOL TO THE SATISFACTION OF THE FIELD INSPECTOR. LEAVE LATERAL GAPS AT THE BOTTOM OF THE ISOLATION MATERIAL TO ALLOW NEW CONCRETE TO FILL IN THE VOIDS AT THE BOTTOM OF THE EXISTING CONCRETE SLABS. USE VIBRATOR AND CONSOLIDATE WITH CARE TO PREVENT DISLOCATION OF JOINT DEVICES.

3
CS-501A
ISOLATION JOINT BETWEEN NEW AND EXISTING PANELS
N.T.S.



4
CS-501A
CONSTRUCTION JOINT BETWEEN ADJACENT NEW PANELS
N.T.S.

1
CS-501A
CONCRETE PAVEMENT
SCALE: 1" = 2'



NOTES:

1. LOCATE CONTROL JOINTS AS SHOWN ON SHEET CS-101A.
2. SEE SPECIFICATIONS FOR INFORMATION AND REQUIREMENTS.
3. SAWCUT SAME DAY CONCRETE IS POURED & AS SOON AS CONCRETE CAN BE CUT WET. DO NOT WAIT TO CUT CONCRETE THE FOLLOWING DAY.
4. SEAL ALL JOINTS WITH FUEL RESISTANT SEMIRIGID EPOXY JOINT FILLER PER DETAIL 2 ON THIS SHEET.

5
CS-501A
CONTROL JOINT (TYP.)
N.T.S.

CONSULTANTS:

SAN BERNARDINO INTERNATIONAL AIRPORT
PAVEMENT REHABILITATION
105 N. LELAND NORTON WAY
SAN BERNARDINO, CA 94208

REVISIONS:	DATE	DESCRIPTION
01/28/2010	FINAL ISSUED TO SBIAA	
12/18/2009	SBIAA REVIEW	

PROJ NO: P506090005
SCALE: AS NOTED
DATE: 12/18/09
DESIGNED BY: RC
DRAWN BY: AAO/AOB/KW
CHECKED BY: RC

SHEET TITLE:
CONSTRUCTION DETAILS

SHEET NO.
CS-501A
SHEET OF